

### Application

- Civil engineering
- Mines, quarries, Coal ore & slurries
- Sewage treatment plants
- General pumping purposes
- Pumping fluid: sludge, liquids containing mud and bentonite

### Pump

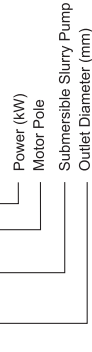
- Max. liquid temperature: +40°C
- Flow: up to 60 m<sup>3</sup>/h
- Head: up to 57 m
- Power: 1.5 kW (2 HP) to 15 kW (20 HP)
- Max. immersion depth: 25 m
- Optional cable length

### Motor

- Copper winding
- Insulation class: B
- Protection class: IP68

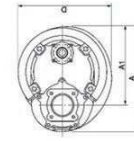
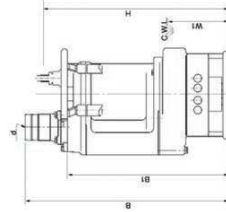
### Identification Codes

**80 KBS 4 4**



### Technical Data

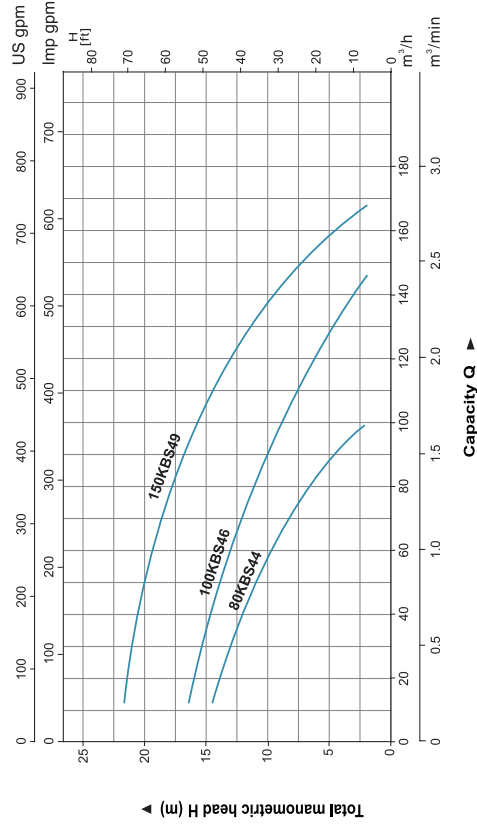
Model	Outlet mm	Power kW	Power HP	Max head m	Max flow m <sup>3</sup> /h	Max flow m <sup>3</sup> /min	Impeller passage mm
80KBS44	80	4	5.5	14.8	99	1.65	30
100KBS46	100	6	8	16.9	150	2.50	30
150KBS49	150	9	12	21.5	168	2.80	30



### Dimension

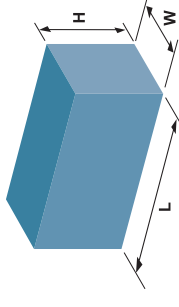
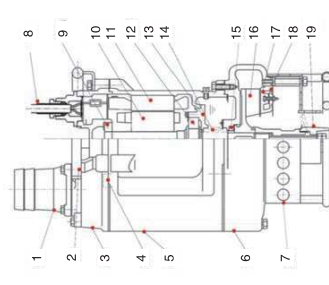
Model	d	A	A1	B	B1	C	D	H	W1
80KBS44	80	350	260	816	666	326	730	250	250
100KBS46	100	415	305	844	688	373	730	250	250
150KBS49	150	434	324	889	709	407	716	250	250

### Hydraulic Performance Curves



### Materials Table

No.	Part	Material	No.	Part	Material
1	Hose coupling	Cast iron	11	Stator	
2	Handle	Steel	12	Bearing	
3	Upper cover	Cast iron	13	Bearing house	Cast iron
4	Motor protector		14	Mechanical seal	SiC-SiC/SiC-SiC
5	Motor body	Cast iron	15	Oil seal	
6	Pump body	Cast iron	16	Impeller	High chrome alloy
7	Strainer	Steel	17	Inlet plate	High chrome alloy
8	Cable		18	Inlet base	Cast iron
9	Bearing		19	Agitator	High chrome alloy
10	Rotor				



### Package Information

Model	N.W (kg)	G.W (kg)	L (mm)	W (mm)	H (mm)	Quantity (PCS/20 TEU)
80KBS44	105	113	855	415	400	190
100KBS46	145	156	915	475	990	143
150KBS49	170	184	975	475	1050	118