



Application

- To transfer clean water with liquid temperature between 0°C and 40°C
- Application in water supply and drainage for factories, mines, municipal facilities as well as field irrigation, etc.

Features

- All new design with ergonomic feature
- High lift series with LEO high efficient hydraulic system
- Reliable 4-stroke gasoline engine with low fuel consumption and high quality crankshaft
- Portable, durable and compact pump frame
- Durable sealing system with special mechanical seal
- Optional outlet selection

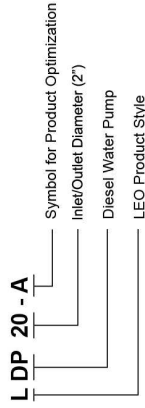
Pump

- Anti-rust cast iron impeller and diffuser
- Max.Suction: 8 m , Suck 5 m needs 120 s
- Inlet/outlet: 2"/3"

Engine

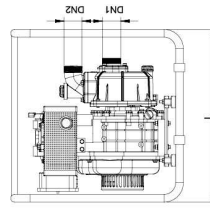
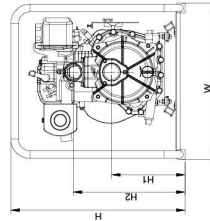
- Single cylinder,4-stroke,Air-cooled
- Max.power: 3.8 HP
- Rated speed: 3600 rpm
- Reliable engine equipped with low engine oil shut off system

Identification Codes



Technical Data

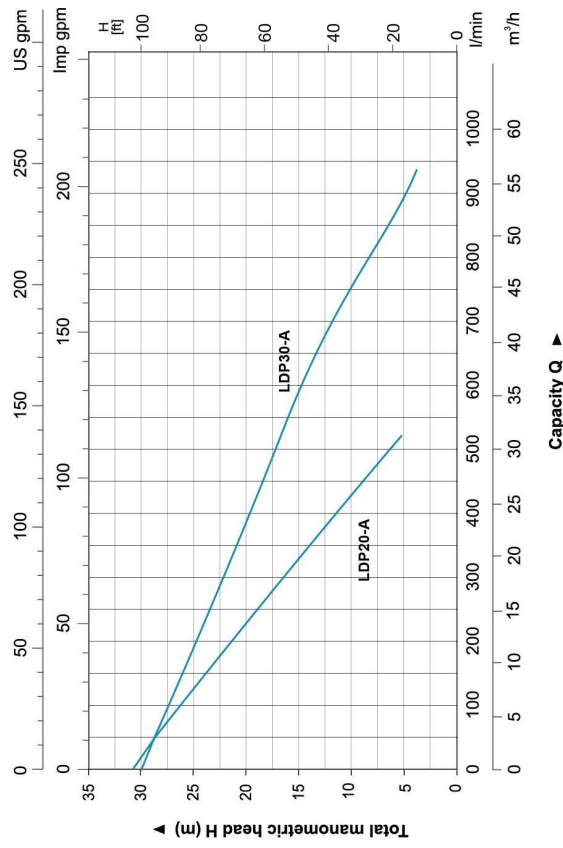
| Model | Power | | Fuel tank | Engine Oil | Displacement | Engine | Q (m ³ /h) | Q (l/min) | H (m) | | | | | | | | | |
|---------|-------|-----|-----------|------------|--------------|--------|-----------------------|-----------|-------|------|-------|-------|------|-------|-------|-----|-------|-------|
| | HP | L | | | | | | | | | | | | | | | | |
| LDP20-A | 3.8 | 2.5 | 0.8 | | 219 | D170 | 0 | 83.3 | 166.7 | 250 | 333.3 | 416.7 | 500 | 583.3 | 666.7 | 750 | 833.3 | 916.7 |
| LDP30-A | 3.8 | 2.5 | 0.8 | | 219 | D170 | 30 | 27 | 26.5 | 24.1 | 21.4 | 19.3 | 16.7 | 15.8 | 13.5 | 11 | 8 | 4.8 |



Dimension

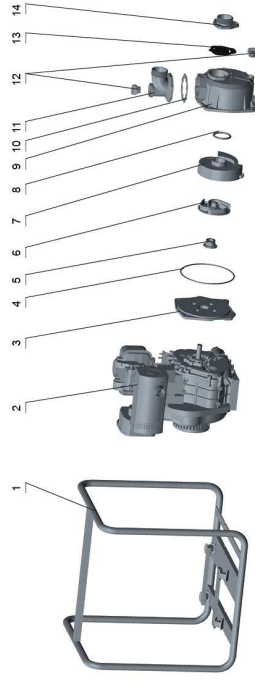
| Model | DN1 | DN1 | L | W | H | H1 | H2 |
|---------|-----|-----|-----|-----|-----|-----|-----|
| LDP20-A | 2" | 2" | 470 | 427 | 536 | 225 | 335 |
| LDP30-A | 3" | 3" | 470 | 427 | 536 | 240 | 390 |

Hydraulic Performance Curves



Materials Table

| No. | Part | Material |
|-----|------------------|----------------|
| 1 | Frame | Steel |
| 2 | Engine | Aluminum |
| 3 | Pump cover | Aluminum |
| 4 | O-ring | NBR |
| 5 | Mechanical seal | Carbon/Ceramic |
| 6 | Impeller | HT200 |
| 7 | Diffuser | HT200 |
| 8 | O-ring | NBR |
| 9 | Pump body | Aluminum |
| 10 | Seal | NBR |
| 11 | Outlet | Aluminum |
| 12 | Plug | ABS |
| 13 | Non-return valve | NBR |
| 14 | Inlet | Aluminum |



Package Information

| Model | GW (Kgs) | L (mm) | W (mm) | H (mm) | Quantity (PCS/20 TEU) |
|---------|----------|--------|--------|--------|-----------------------|
| LDP20-A | 35.1 | 485 | 435 | 550 | 244 |
| LDP30-A | 36.2 | 485 | 435 | 550 | 244 |

