



Application

- Wastewater drainage in factories, construction sites and commercial facilities
- Drainage system in municipal sewage treatment plants
- Drainage station in residential quarters
- Municipal projects
- Methane pools and field irrigation in countryside

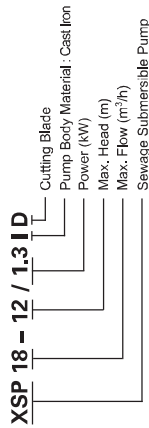
Pump

- Max. immersion depth: 5 m
- Max. liquid temperature: +40°C
- Liquid pH value: 4 – 10
- Liquid kinematic viscosity: $7 \times 10^{-6} \sim 23 \times 10^{-6} \text{ m}^2/\text{s}$
- Max. liquid density: $1.2 \times 10^3 \text{ kg/m}^3$

Motor

- Copper winding
- Built-in thermal protector
- Stainless steel welded shaft
- Insulation class: B
- Protection class: IP68

Identificati

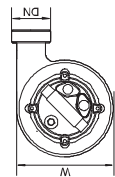
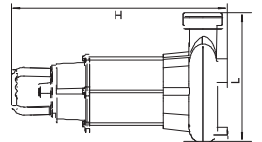


XSP 18 - 12 / 1.3 ID

Sewage Submersible Pump

Technical Data

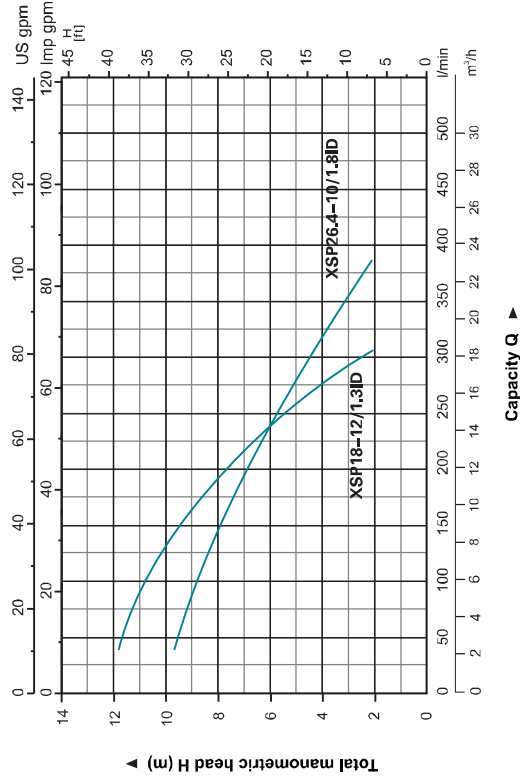
| Model | Power | | Voltage (V/Hz) | Outlet diameter (mm) | Max. flow (l/min) | Max. head (m) | GW (kgs) | Packing size (mm) | Quantity (PCS/20 TEU) |
|------------------|-------|------|----------------|----------------------|-------------------|---------------|----------|-------------------|-----------------------|
| | (kW) | HP | | | | | | | |
| XSP18-12/1.3ID | 1.3 | 1.75 | 220/50 | 50 | 300 | 12 | 22.8 | 570X310X245 | 675 |
| XSP26.4-10/1.8ID | 1.8 | 2.4 | 220/50 | 75 | 440 | 10 | 30 | 585X350X245 | 540 |



Dimension

| Model | DN | L (mm) | W (mm) | H (mm) |
|------------------|--------|--------|--------|--------|
| XSP18-12/1.3ID | 2" | 252 | 191 | 510 |
| XSP26.4-10/1.8ID | 2 1/2" | 290 | 196 | 520 |

Hydraulic Performance Curves



Materials Table

| No. | Part | Material | No. | Part | Material |
|-----|-------------------|-----------------|-----|------------------|-----------------|
| 1 | Boil | Stainless steel | 30 | Undrilled washer | 65Mn |
| 2 | Stretching washer | Stainless steel | 31 | Ball bearing | |
| 3 | Washer | Stainless steel | 32 | Rotor | |
| 4 | Boil | Stainless steel | 33 | Ball bearing | |
| 5 | Washer | Stainless steel | 34 | Screw | Stainless steel |
| 6 | Handle | Stainless steel | 35 | Washer | Stainless steel |
| 7 | Nut | NR | 36 | Mechanical seal | HT200 |
| 8 | Protector | Stainless steel | 37 | C-Clamp | Carbon/Carbon |
| 9 | Cable presser | Stainless steel | 38 | C-Clamp | HT200 |
| 10 | Washer | Stainless steel | 39 | Oil c-ring | NBR |
| 11 | Screw | Stainless steel | 40 | Screw | Stainless steel |
| 12 | Boil | Stainless steel | 41 | C-Clamp | HT200 |
| 13 | C-Clamp | NBR | 42 | C-Clamp | HT200 |
| 14 | Flange | Stainless steel | 43 | Screw | Stainless steel |
| 15 | Flange | Stainless steel | 44 | Oil seal | |
| 16 | Flange | Stainless steel | 45 | Pump body | HT200 |
| 17 | Cable Protector | CR | 46 | Impeller | HT200 |
| 18 | Capacitor cover | HT200 | 47 | Shielding ring | 40Cr |
| 19 | Capacitor | NER | 48 | Washer | Stainless steel |
| 20 | C-Clamp | NER | 49 | Ball | Stainless steel |
| 21 | Rubber washer | NER | 50 | Rubber cutter | 40Cr |
| 22 | Stretching washer | 65Mn | 51 | Washer | 40Cr |
| 23 | Screw | 65Mn | 52 | Screw | Stainless steel |
| 24 | Washer | NER | 53 | Key | Steel |
| 25 | Line protector | NER | 54 | Float switch | NBR |
| 26 | Rubber cover | HT200 | 55 | Cable nut | ABS |
| 27 | Thermistor | NER | 56 | Connector | ABS |
| 28 | C-Clamp | NER | 57 | Outlet connector | ABS |
| 29 | Motor rotor | Stainless steel | | | |

