



Application

- Wastewater drainage in factories, construction sites and commercial facilities
- Drainage system in municipal sewage treatment plants
- Drainage station in residential quarters
- Municipal projects
- Methane pools and field irrigation in countryside

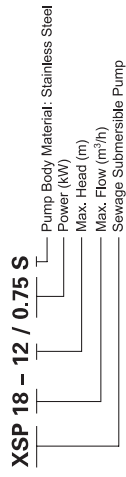
Pump

- Max. immersion depth: 5 m
- Max. liquid temperature: +40°C
- Liquid pH value: 4 – 10
- Liquid kinematic viscosity: $7 \times 10^{-2} \sim 23 \times 10^{-6} \text{ m}^2/\text{s}$
- Max. liquid density: $1.2 \times 10^3 \text{ kg/m}^3$

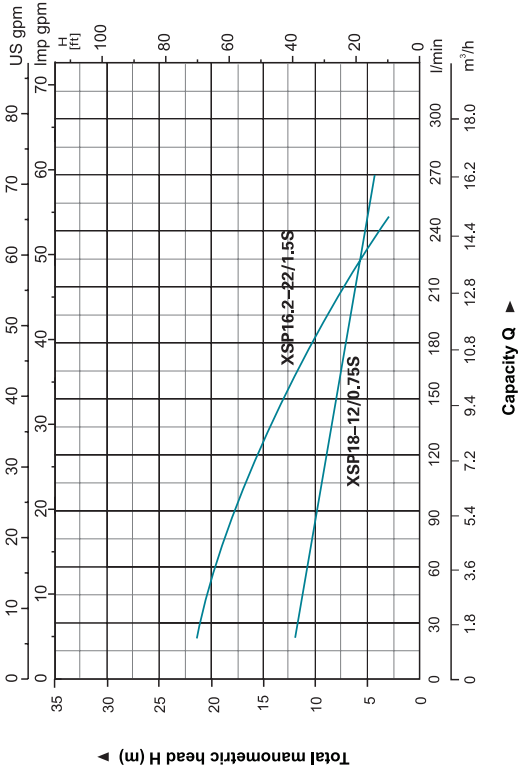
Motor

- Copper winding
- Built-in thermal protector
- Stainless steel welded shaft
- Insulation class: B
- Protection class: IP68

Identification Codes

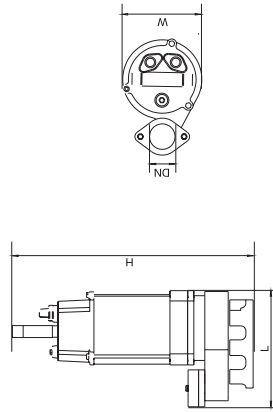


Hydraulic Performance Curves



Technical Data

Model	Power (kW)	HP	Outlet diameter (mm)	Voltage (V/Hz)	Max. flow (l/min)	Max. head (m)	Max. dia. of port (mm)	GW (kgs)	Packing size (mm)	Quantity (PCS/20 TEU)
XSP18-12/0.75S	0.75	1.0	50	220/50	300	12	25	22.2	540x265x195	1056
XSP16.2-22/1.5S	1.5	2.0	40	220/50	270	22	10	27.5	585x350x245	540



Dimension

Model	DN	L (mm)	W (mm)	H (mm)
XSP18-12/0.75S	2"	226	159	500
XSP16.2-22/1.5S	2"	275	198	530

Materials Table

No.	Part	Material	No.	Part	Material
1	Bolt	Stainless steel	29	Stator	
2	Stratching washer	Stainless steel	30	Wave washer	65Mn
3	Washer	Stainless steel	31	Ball bearing	
4	Bolt	Stainless steel	32	Rotor	
5	Washer	Stainless steel	33	Ball bearing	
6	Washer	Stainless steel	34	Ball bearing	
7	Nut	Stainless steel	35	Washer	Stainless steel
8	Protector	FKM	36	Mechanical seal	Stainless steel
9	Cable presser	Carbon/Ceramic	37		
10	Washer	Stainless steel	38	O-ring	FKM
11	Screw	Stainless steel	39	Oil chamber cover	Stainless steel
12	Bolt	Stainless steel	40	Screw	Stainless steel
13	O-ring	FKM	41	Washer	Stainless steel
14	Bolt	Stainless steel	42	O-ring	FKM
15	Flange	Stainless steel	43	Screw	Stainless steel
16	Cable	CR	44	Oil seal	Stainless steel
17	Cable protector	Stainless steel	45	Impeller	Stainless steel
18	Cable cover	Stainless steel	46	Nut	Stainless steel
19	Capacitor	NR	47	Washer	Stainless steel
20	Capacitor	NR	48	Washer	Stainless steel
21	Rubber washer	FKM	49	Connector	ABS
22	Screw	C22/40	50	O-ring	FKM
23	Stratching washer	65Mn	51	Connection nut	Stainless steel
24	Washer	C22/40	52	Rubber washer	FKM
25	Cable holder	NR	53	Pump body	Stainless steel
26	Motor cover	HT200	54	Base plate	Stainless steel
27	Thermal protector	FKM	55	Washer	Stainless steel
28	O-ring	FKM	56	Screw	Stainless steel

